



## BXUVC.W605 Fire Resistance Ratings

[Page Bottom](#)

### Fire Resistance Ratings

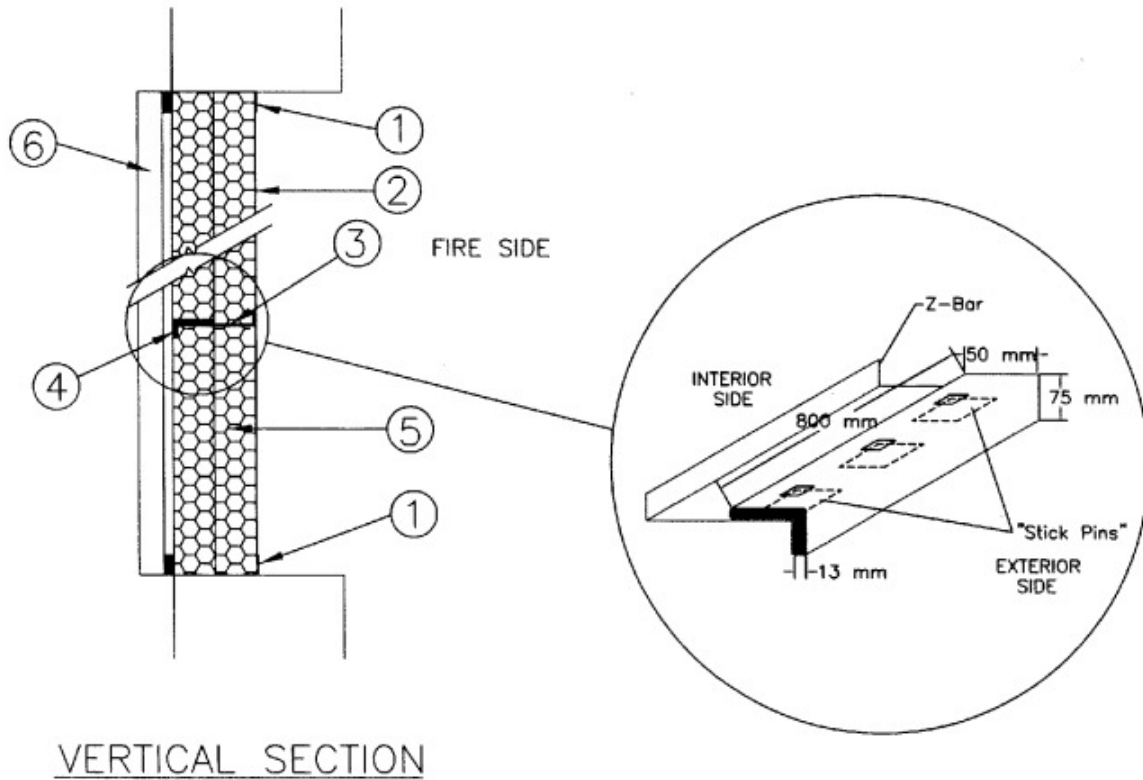
[See General Information for Fire Resistance Ratings](#)

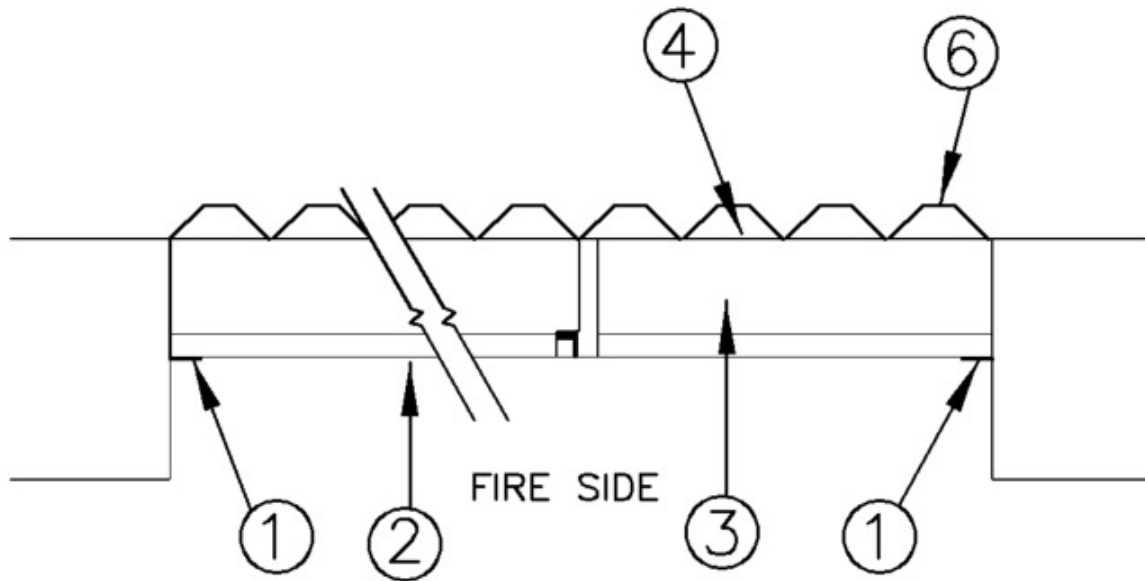
Design No. W605

January 28, 2010

Assembly Rating - 1 h

Equivalent Opening Factor at 2 h ( $F_{EO}$ ) = 0.02





1. **Flashing Channels** — 152 mm wide channels with 45 mm and 76 mm flanges, fabricated from 1.52 mm thick galvanized or aluminum-zinc alloy coated sheet steel. Fastened to the frame with 6.4 mm by 45 mm anchors spaced 406 mm OC.

2. **Interior Steel Liner** — Panels available in various widths, fabricated from 0.61 mm thick galvanized or aluminum-zinc alloy coated sheet steel. Panels may be corrugated. Fastened to flashing channels with 19 mm long sheet metal screws spaced 305 mm OC. Interlocking joints of adjacent panels sealed with factory-applied butyl caulking and secured with 19 mm long sheet metal screws spaced 305 mm OC. Butyl tape applied between the steel liner panels and the flashing channels to provide an air barrier.

3. **Z-Bar** — 152 mm wide notched z-bars with 25 mm and 38 mm flanges, fabricated from minimum 1.22 mm thick galvanized or aluminum-zinc alloy coated sheet steel. Spaced a maximum of 1525 mm OC. Z-bar may be oriented with flange upwards or downwards against the exterior cladding. Fastened to the steel liner panels with 19 mm long sheet metal screws spaced not more than 250 mm OC.

4. **Ceramic Fibre Blanket** — 128 kg/m<sup>3</sup> density, 13 mm thick, minimum 100 mm wide, attached to the z-bar sub-girts with stick pins or #10 screws and 38 mm diameter washers spaced 250 mm OC or adhesives Resbond™ 907GF by Cotronics Corp. or Quick-Stick™ by Ductmate Industries Inc.

• 5. **Batts and Blankets** — BZJZC (Guide No. 40 U18.2). Two layers of 96 kg/m<sup>3</sup> density mineral wool batts processed from rock and slag, 610 or 813 mm wide by 1220 or 1525 mm long by 76 mm thick, installed with joints staggered. The overall thickness of the wall may be increased provided the Mineral Fibre Insulation (item 5) is used to completely fill the wall cavity, and provided the size of the Flashing Channels (item 1) and Z-Bar (item 3) are increased to match the thicker walls.

#### CGC INC

**FIBREX INSULATIONS INC** — Type FBX 1280 FW

**ROXUL INC** — Type Roxul FireWall 605

6. **Exterior Cladding and Accessories** — Corrugated panels, available in various profiles and widths, fabricated from 0.46 mm thick galvanized or aluminum-zinc alloy coated sheet steel. Fastened to the z-bar with 19 mm long sheet metal screws spaced 305 mm OC. Fastened to flashing channels with 19 mm long sheet metal screws spaced 406 mm OC. Side lap joints of adjacent panels fastened with 19 mm long sheet metal screws spaced 406 mm OC. The top and bottom of the exterior cladding are trimmed with cap and drip flashings respectively.

Last Updated on 2010-01-28

Questions?

Notice of Disclaimer

Page Top

Copyright © 2010 Underwriters' Laboratories of Canada®

The appearance of a company's name or product in this database does not in itself assure that products so identified have been manufactured under ULC's Follow-Up Service. Only those products bearing the ULC Mark should be considered to be Listed and covered under ULC's Follow-Up Service. Always look for the Mark on the product.

ULC permits the reproduction of the material contained in the Online Certifications Directory subject to the following conditions: 1. The Guide Information, Designs and/or Listings (files) must be presented in their entirety and in a non-misleading manner, without any manipulation of the data (or drawings). 2. The statement "Reprinted from the Online Certifications Directory with permission from Underwriters Laboratories of Canada" must appear adjacent to the extracted material. In addition, the reprinted material must include a copyright notice in the following format: "Copyright © 2010 Underwriters Laboratories of Canada@"

An independent organization working for a safer world with integrity, precision and knowledge.

