



## MONCTON HOSPITAL ATRIUM

Moncton, New Brunswick

(Reprinted with permission from  
ArcelorMittal Dofasco Steel Design, 2008)

### Design and Construction Team

**Owner:** Government of  
New Brunswick

**General Contractor:**  
Maxim 2000 Inc., 506-652-9292

**Architectural:**  
Design Workshop Ltd.  
506-858-9119  
Guy LeBlanc, Project Architect  
Raven Spanier, Design Architect  
Ian MacLaughlan, Contract  
Administration  
Fernand Daigle, Architect

**Structural:** Valron Engineers Inc.  
506-856-9601

**Mechanical:**  
John MacLean Management Ltd.  
506-858-0313

**Electrical:**  
R.E. LeBlanc Consultants Inc.  
506-858-0950

**Architectural Consultant:**  
Prodel Design Inc., 506-863-1122

**Atrium Installation:**  
Maritime Canopies Ltd.  
506-847-2750

**Atrium Wall and Roof  
cladding supplier:**  
Roll Form Group, 1-800-233-6228

**Steel Deck Supplier:**  
Canam Steel, 506-857-3164

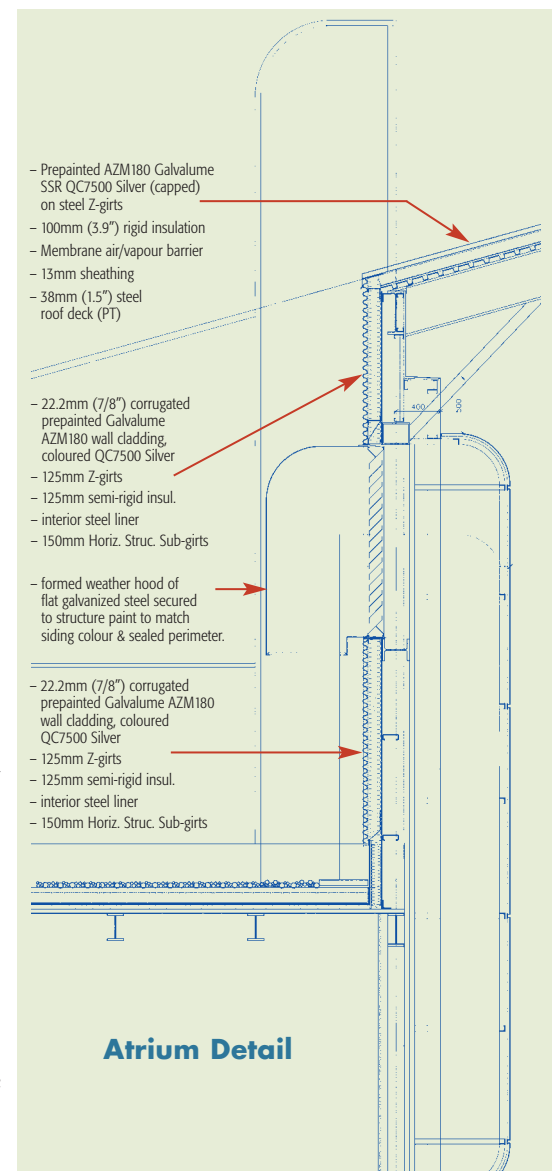
**Structural Steel Installer:**  
Titan Steel Group, 506-525-2416



## Prepainted Galvalume Offers Economies and Aesthetics for Moncton Hospital Atrium

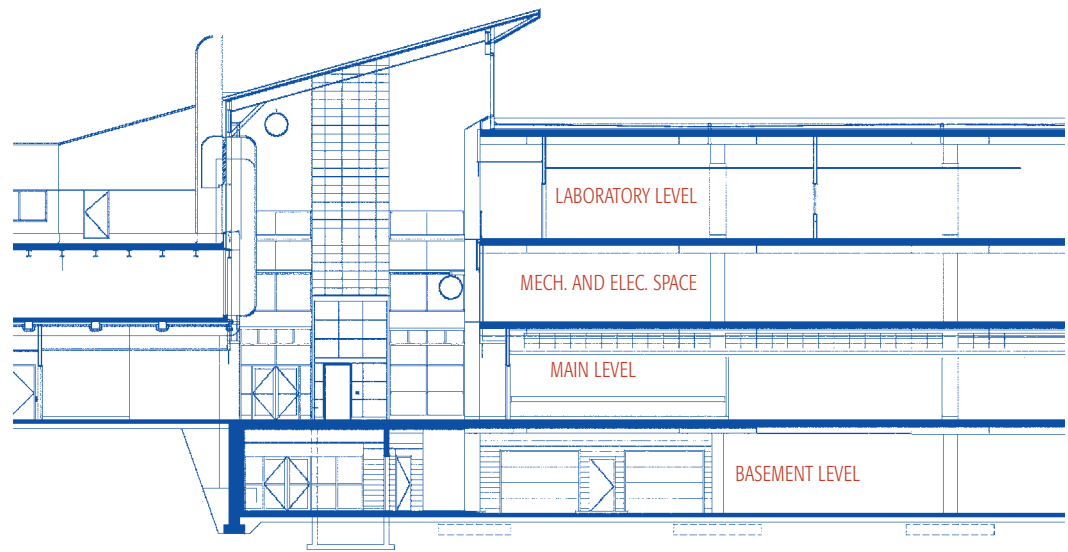
The \$47 million project, which began in September 2005, included an under ground parking level, a main floor ambulatory care facility, an interstitial level and upper floor to house laboratories. The new atrium, which serves as a physical construction buffer and transition area between the new and existing facilities, was started in April 2007. "It provides a naturally lit, healing environment to serve staff and patients," emphasizes Raven Spanier, Design Workshop Ltd. – one of the project architects involved in the planning, design and execution of the renovation and integration with the existing hospital buildings.

Steel cladding and roofing on the new atrium was chosen to colour match the material on the existing building. Light steel framing was also used to frame around existing and new ductwork to fasten the wall finish in the interface structure. "With limited space for interfacing, steel was the material of choice because it is easier to manipulate in these conditions," says Spanier. Maritime Canopies Ltd. installed 743m<sup>2</sup> (8,000 sq. ft.) of steel cladding, consisting of linear panels, Z-bars, and insulation. Spanier comments that the steel cladding was selected for the Atrium because



**Photos:**

1. The exterior cladding is prepainted Galvalume steel with a polyurethane paint system, colour QC7500 Silver (specified to match the colour of adjacent wall panels), and covers the north wall (roof level) and portions of the east and west end walls.
2. Prepainted Galvalume steel cladding proved to be aesthetically effective and an economic building material for the new atrium that is part of the Moncton Hospital Redevelopment project.

**Atrium Cross Section**

it is economical, aesthetically pleasing and is a neutral colour. “Silver offers a richer look and matches other metal components,” he says. The paint system provides excellent colour and gloss retention, as well as excellent flexibility.

James Teichman of Maritime Canopies, the cladding installer, prefers steel to other materials. “Steel is much easier to work with because everything is more true,” he emphasizes. There is 743m<sup>2</sup> (8,000 sq. ft.) of standing seam metal roofing consisting of ZF075 galvalume steel deck, gypsum board, vapour barrier, Z-bars and semi-rigid insulation. The Roll Form Group supplied all the exterior cladding material, .76mm (.0299”) prepainted batten clad roofing and 22.2mm (7/8”) corrugated wall panels, coloured QC7500 Silver and manufactured from ArcelorMittal Dofasco AZM150 Galvalume.

The entire project is expected to be complete in May 2008.

**Canadian Sheet Steel Building Institute**

652 Bishop St. N., Unit 2A  
Cambridge, ON N3H 4V6  
Tel: (519) 650-1285  
Fax (519) 650-8081  
www.cssbi.ca